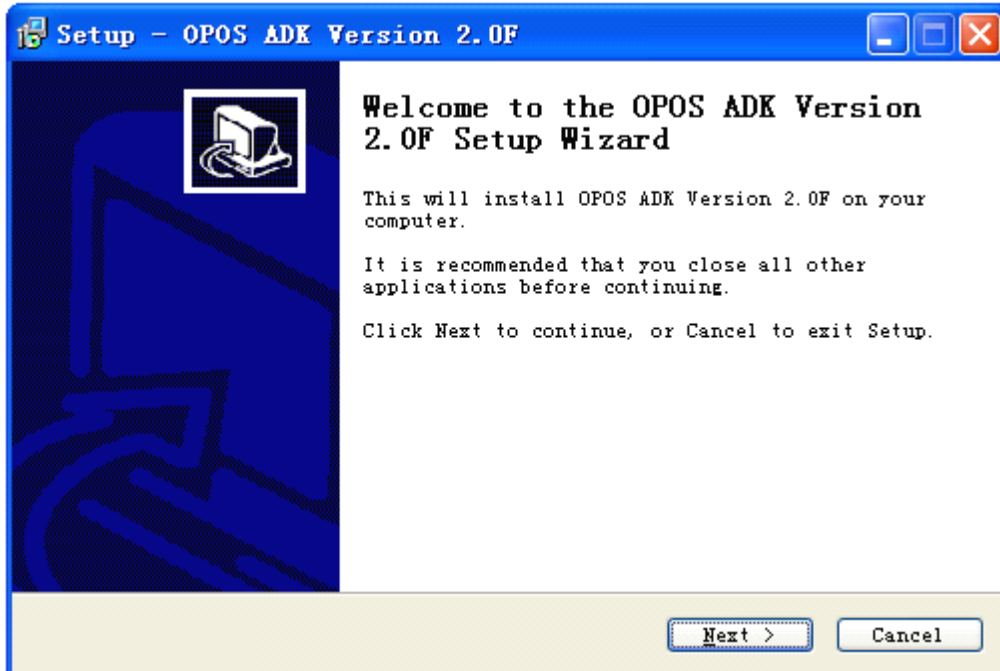


# OPOS User's Manual

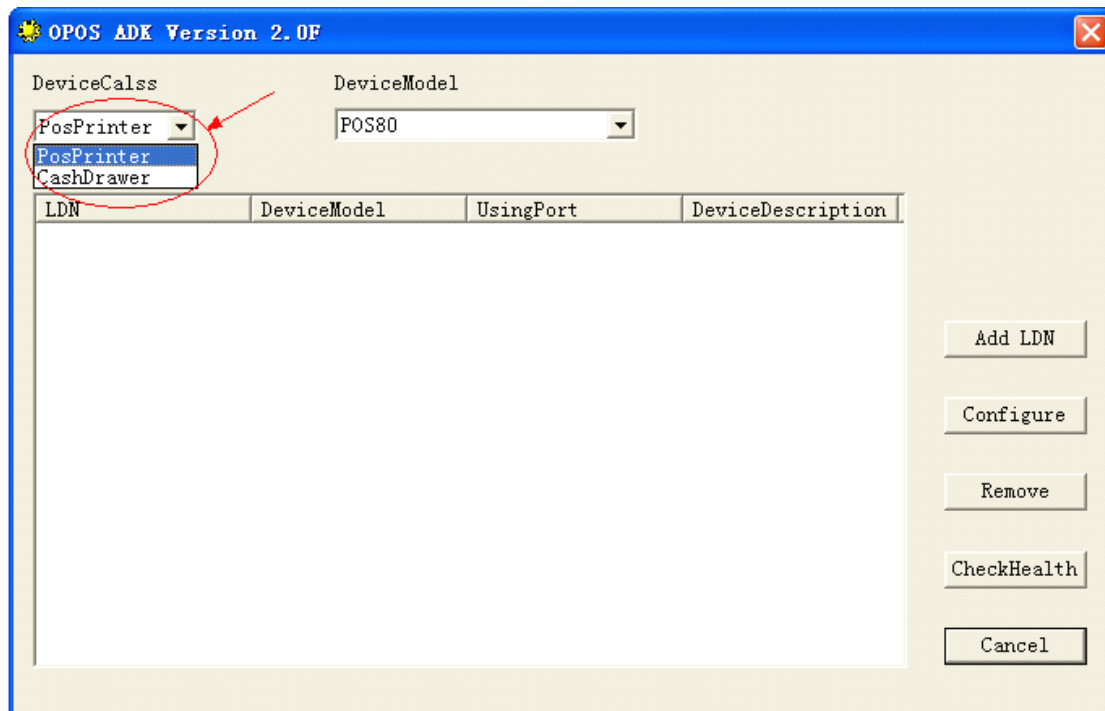
- 1、 Install the OPOS ADK by running OPOS80E 2.0F.EXE.



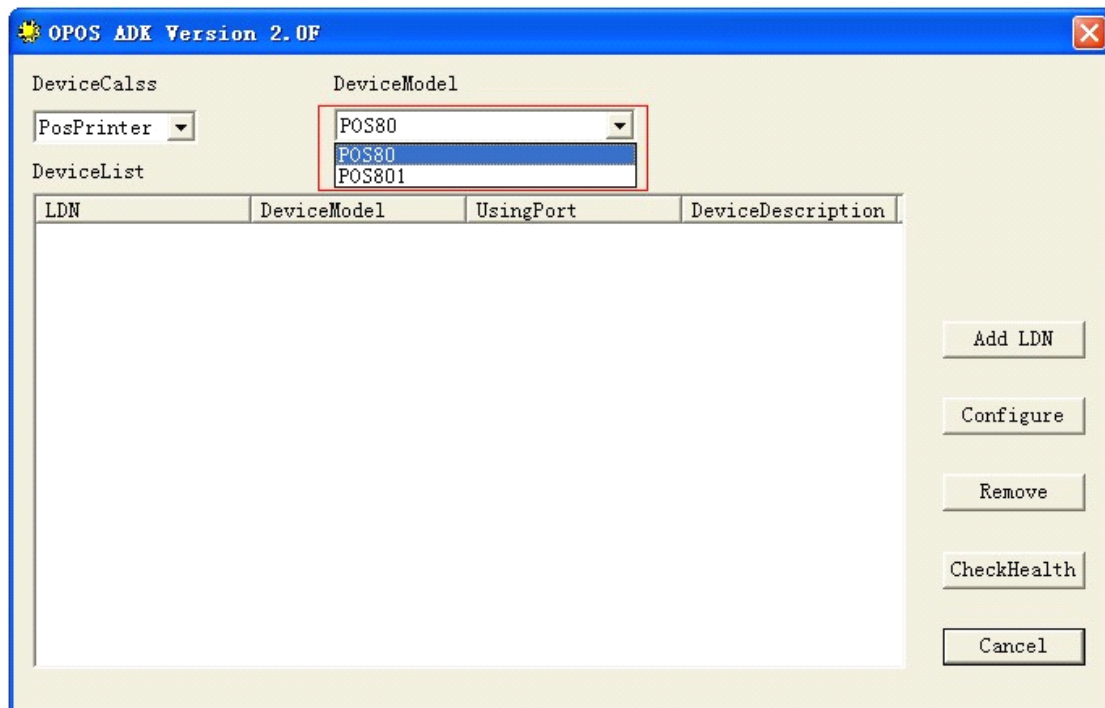
- 2、 Setup has completed as shown below.



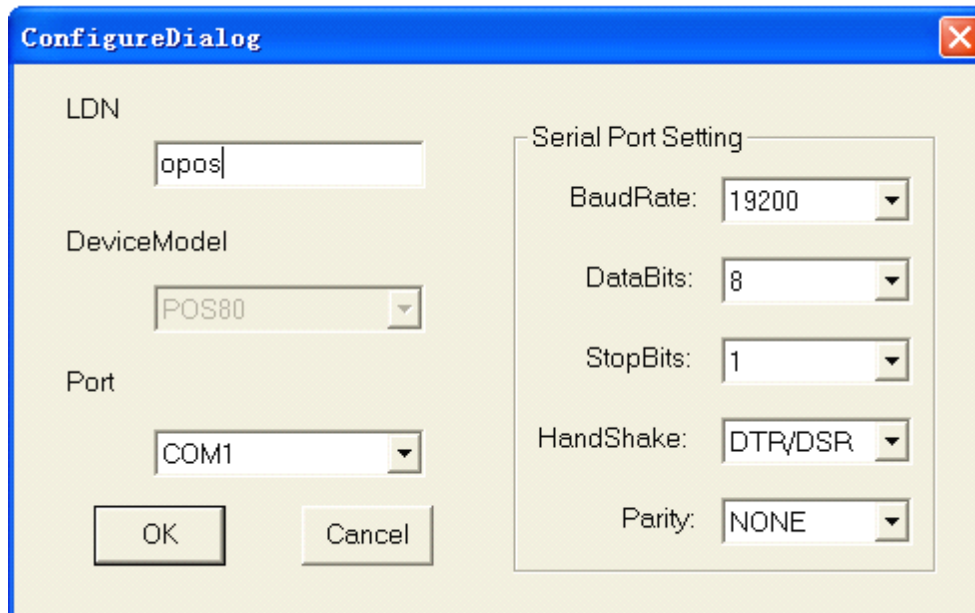
3、 Run AdminTool.exe to configure the OPOS.



4、 Select “PosPrinter” as “DeviceClass” and select “POS80” or “POS801” as “DeviceModel”, the setting is as shown below.

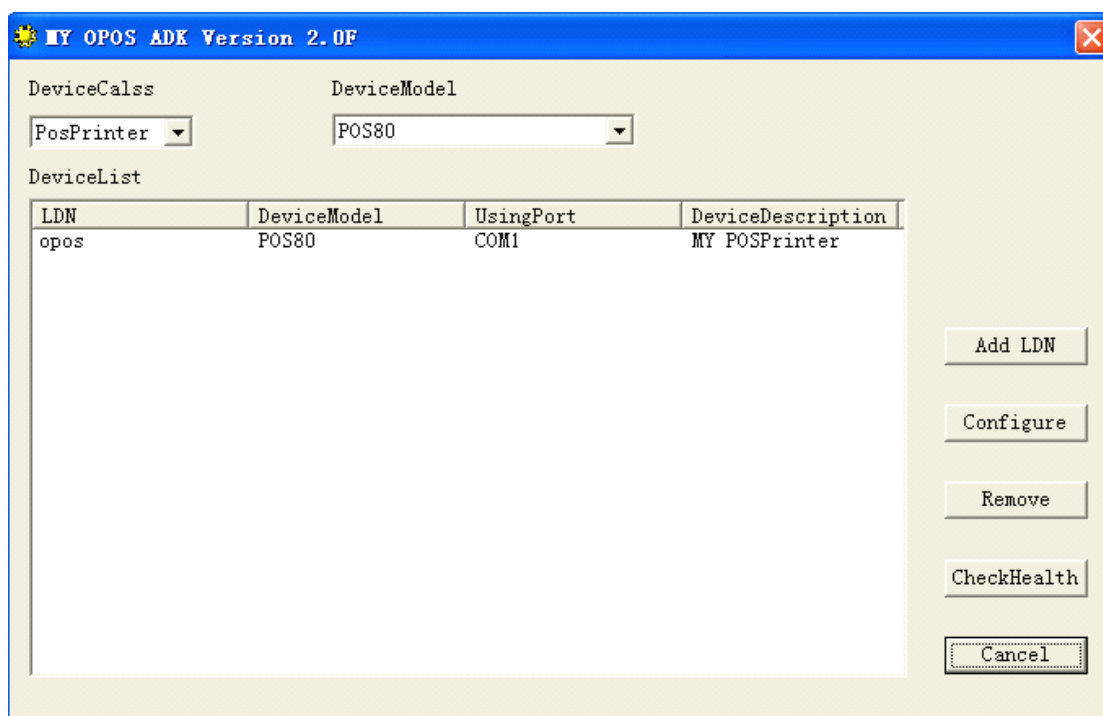


5、 Click the “Add LDN” button, in the shown window fill in a new Logic Device Name (LDN), and select a communication port for the printer. Click “OK” to apply.



The image shows a dialog box titled "ConfigureDialog" with a close button (X) in the top right corner. It contains the following fields and settings:

- LDN: A text input field containing "opos".
- DeviceModel: A dropdown menu showing "POS80".
- Port: A dropdown menu showing "COM1".
- Serial Port Setting (grouped in a box):
  - BaudRate: 19200
  - DataBits: 8
  - StopBits: 1
  - HandShake: DTR/DSR
  - Parity: NONE
- Buttons: "OK" and "Cancel".



The image shows a window titled "MY OPOS ADK Version 2.0F" with a close button (X) in the top right corner. It contains the following elements:

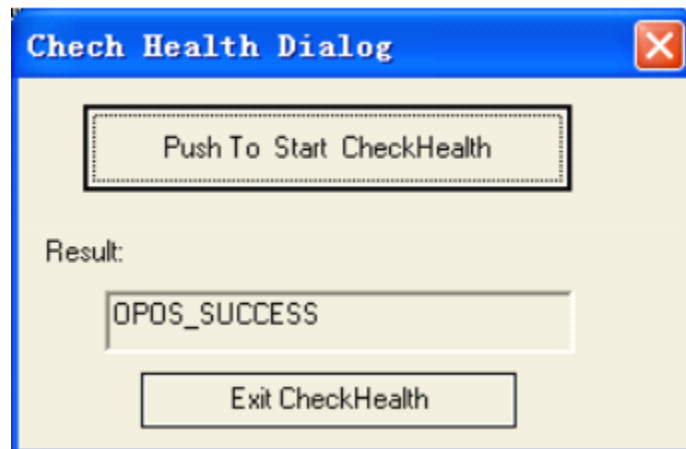
- DeviceCalss: A dropdown menu showing "PosPrinter".
- DeviceModel: A dropdown menu showing "POS80".
- DeviceList: A table with the following data:

LDN	DeviceModel	UsingPort	DeviceDescription
opos	POS80	COM1	MY POSPrinter

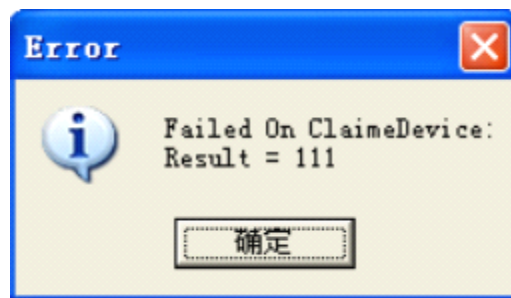
- Buttons: "Add LDN", "Configure", "Remove", "CheckHealth", and "Cancel".

6、 Select “Unit1” in the Device List and click “Check Health” to test the printer configuration and connection. If the printer configured well

and connected successfully, “OPOS\_SUCCESS” will be shown in the testing result.



If the printer configured wrong or connected unsuccessfully, an Error window will be shown. Please reconfigure and reconnect the printer.



7、 **Note:** Before using the OPOS, please be sure that there is no other OPOS software or LDN for other printer models to avoid conflict of the printer port and LDN. In the mean time, please be sure that there is no other application (including driver application) use the same communication port as OPOS software does, otherwise, communication failure will be happened.

**2010-05-01**